



Regional raw material conception in the Czech Republic (case study Liberec Region)



Petr Rambousek¹, Josef Godány¹, Blažena Wertichová², Vojtěch Wertich¹

1) - Czech Geological Survey, Klárov 3, 118 21 Praha 1, Czech Republic

2) - VŠB – Technical University of Ostrava, Faculty of Mining and Geology, 17. listopadu 2172/15, 708 00 Ostrava-Poruba, Czech Republic

Contact person: petr.rambousek@geology.cz

The first need for regional raw materials policies has been expressed in the former Czech national Raw Materials Policy in 1999. In connection to this task, the Ministry of Industry and Trade in cooperation with Czech Geological Survey prepared during year 2003 regional raw materials policies for all new formed regions in the country. However, only few of them approved those documents as strategic document by regional governments. Exceptional is the Regional Raw Materials Policy of Liberec Region and their updates.

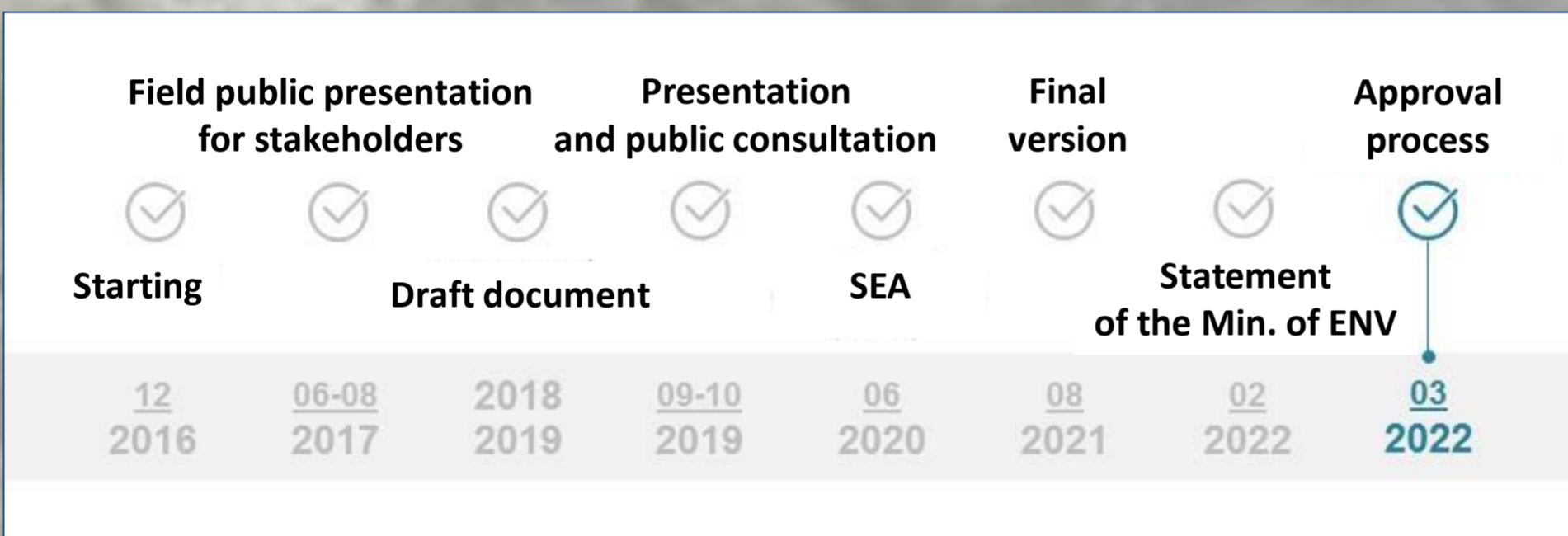
Regional raw materials policy was for the first time approved as strategic document of the Liberec Region in 2003. It deals with all mineral deposits within the jurisdiction and propose its use and development in coordination with the land use plans in the mid-term horizon. The regional policy is based on the tasks of national raw materials policy, and it is a professional basis for decision-making on protection and use of mineral deposits within the region. Other users of the regional raw materials policy are national and regional authorities concerned, municipalities, Ministry of Industry and Trade, Ministry of Environment, and other relevant stakeholders.

The Liberec Region was the only one from all regions in the country, who run the regular amendments of its Regional Raw Material Policy. For the first time it was in 2011. The need for the second update occurred due to the changes in mining legislation, actualization of State Raw Material Policy in 2017, out-of-date data about mineral deposits, needs to secure future supply of construction materials in region, etc.

The successful 2nd update covers several specific issues, such as protection of deposits of radioactive minerals, sustainable mineral development and mining of glass sands and securing sustainable supply of sands, gravels and other aggregates for publicly financed buildings (especially the transport infrastructure) within the region. It also touches the possibilities of saving primary resources by using recycled raw materials in constructions. The policy document includes assessment of potential conflicts of interests and propose solutions for its minimization and covers issues of impact of mining from and to bordering regions and countries.

Following a public discussion of the SEA (Strategy Impact Assessment) study, the document was adopted by the Regional Government as a Strategic Regional Document in the March 2022.

The major milestones for the study's design and approval with a time schedule are shown below.



The regional characteristic of Liberec Region:



Area: 3 163 km²

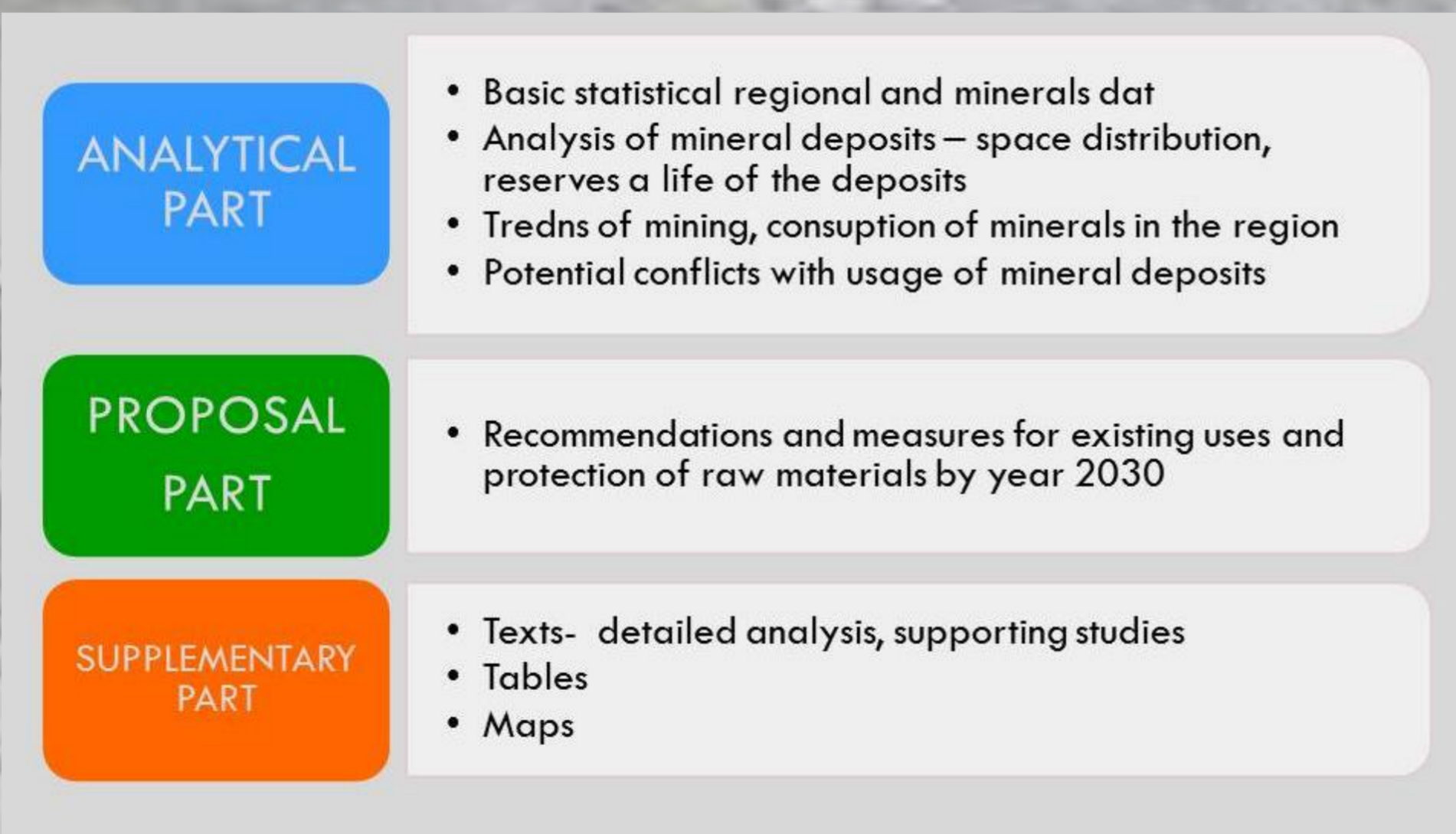
No. of villages and towns: 215

Number of inhabitants: 443 398 (01/2020)

Density of inhabitants: 139,8 persons/km²

The 2nd smallest region in CR

The document consists from three main parts:

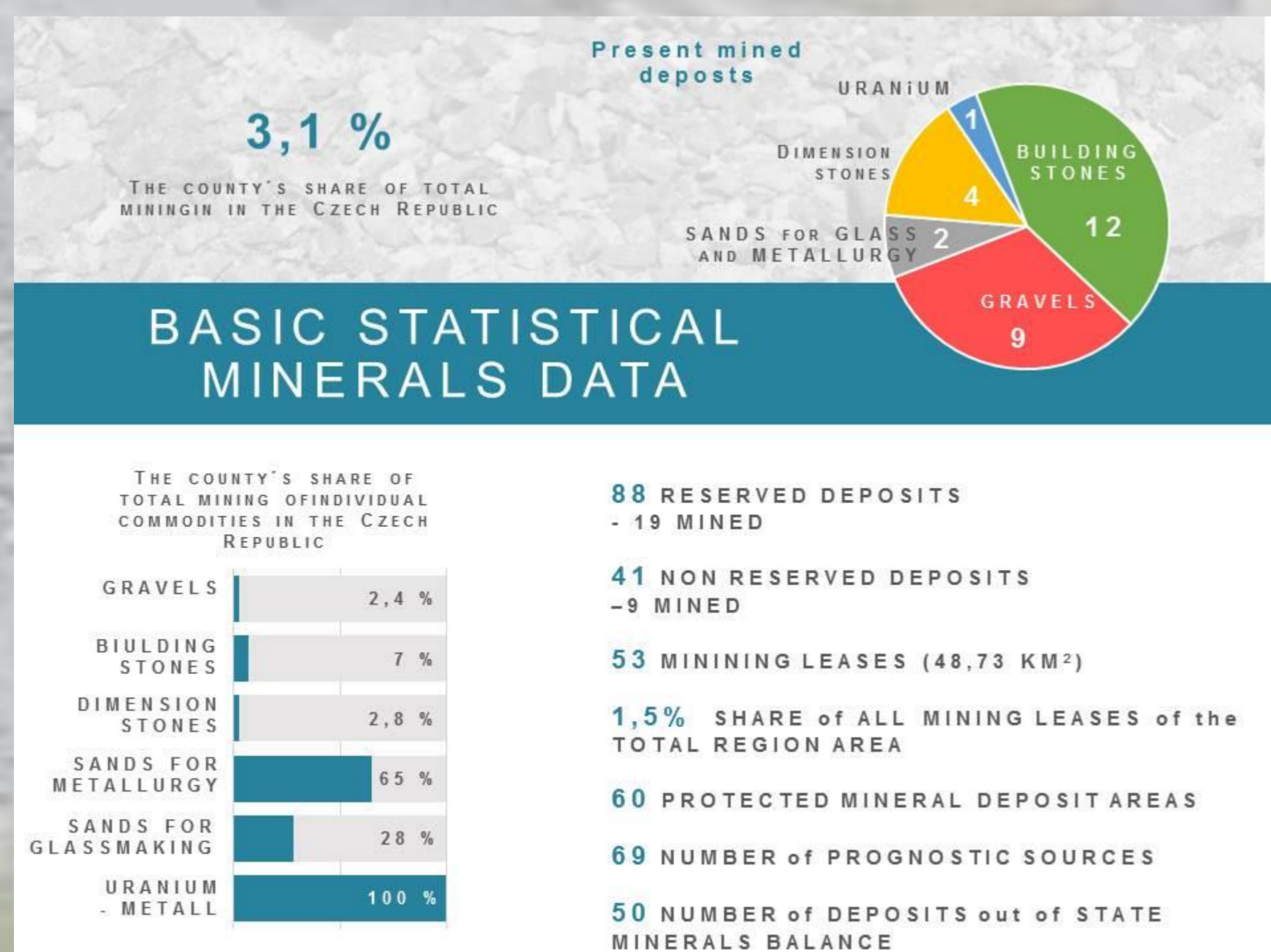


Administrative bodies of the Liberec Region: The Governor of the Region, Regional Council, Regional Assembly, Regional authority – Regional office.
The Neisse-Nisa-Nysa Euroregion also extends into the Liberec District.

The public field presentation for stakeholders:



The regional minerals statistic:

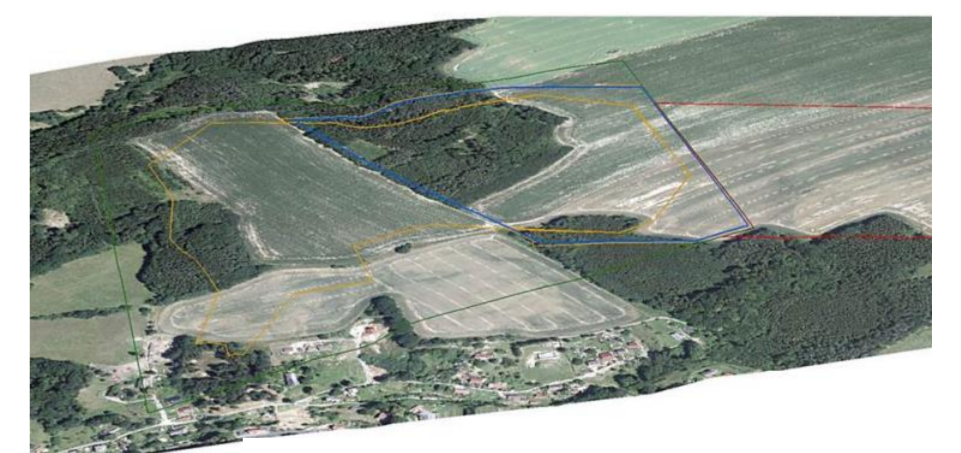


Proposal part- the main topics to solving

- REGULAR UPDATE of The Regional Minerals policy
- REGULAR UPDATE REGIONAL MINERALS REGISTRY
- STUDY of URANIUM DEPOSIT USAGE and PROTECTION
- PRESENTATION of MINERALS WEALTH on the Liberec Region for public
- PERMANENT SOLVING the POTENTIAL CONFLICT with nature and waters protection
- DETAILED STUDY for POSSIBILITY of USAGE THE SECONDARY MATERIALS
- SOLVING the FINAL PROTECTION of REGISTERED DEPOSITS WITHOUT PRESENT PROTECTION
- HELP TO SOLVING CROSS BORDER CONFLICTS

BOHATICE

Planned gravels deposit to open



LUHOV-BRNIŠTĚ - TLUSTEC



STRÁŽ POD RALSKEM U-deposit

Acknowledgement: The studies of Update of Regional Raw Material Policy of Liberec Region were elaborated with financial support of Liberec Region.

