



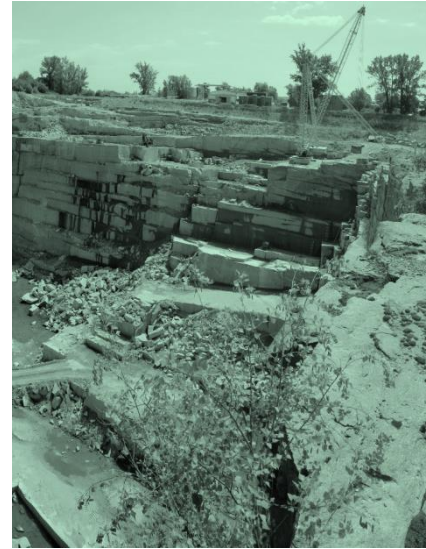
Mineral and Energy Economy
Research Institute
Polish Academy of Sciences
Division of Mineral Policy

invites to participate in the International Conference

*Second announcement
Preliminary program*

Mineral deposits safeguarding as a basis of mineral raw materials safety

10-11 May 2022 Kraków, Poland



Honorary patronage

Jacek SASIN
Minister of State Assets



MINISTRY
OF STATE
ASSETS

Piotr DZIADZIO
Chief National Geologist,
Government Plenipotentiary for the
State's Mineral Policy



Ministry of Climate
and Environment

Witold KOZŁOWSKI
Marshal of the Małopolska Region

Polish Geological Society

 MAŁOPOLSKA



PRELIMINARY PROGRAM*

10.05.2022 (Tuesday)

09.30-11.00 Registration

10.30-11.00 Welcome coffee

11.00-13.15 Opening Session

- Galos K., Kot-Niewiadomska A. (Mineral and Energy Economic Research Institute, Polish Academy of Sciences, Poland) - The significance of mineral deposits safeguarding as the backbone of the European minerals security
- Dziadzio P. (Ministry of Climate and Environment, Poland) - Mineral Policy of Poland, *tbc*
- Cios D. (European Commission, DG Grow, Belgium) - EU mineral policy vs. mineral deposits safeguarding
- Solar S. (UNECE, Switzerland), Sabra G. (Politecnico di Torino, Italy) - Safeguarding mineral deposits using the United Nations Framework Classification for Resources
- Nieć M., Radwanek-Bąk B. (Mineral and Energy Economic Research Institute, Polish Academy of Sciences, Poland), Koźma J. (Polish Geological Institute, Poland) - Polish approach to the mineral deposits safeguarding. Experiences and problems
- Wårell L. (Luleå University of Technology, Sweden) - Analysis of instruments and systems of mineral deposits safeguarding in a European context
- Carvalho J. M.F (Laboratorio Nacional de Energia e Geologia, Portugal) - Land use planning: a key factor for mineral developments

13.15-14.15 Lunch

14.15-16.00 Session II

- Arvidsson R. (Swedish Geological Survey, Sweden) - MinLand - Mineral resources in sustainable land use
- Gugereil K. (University of Natural Resources and Life Sciences, Austria), Endl A. (Vienna University of Economics and Business, Austria), Tost M. (Montanuniversitaet Leoben, Austria) - The role of minerals safeguarding in land-use planning policy in Austria
- Marasmi Ch., Romagnoli M. (Emilia-Romagna Region, Italy) - The safeguarding of raw material through the mineral planning process. The Emilia-Romagna Region experience
- Stefanowicz J. (JURIS Law Firm, Poland) - Protection of the sources of raw materials in the rock mass in the Raw Materials Policy of the State
- Wojtacha P., Mgłosiek J. (State Mining Authority, Poland) - Management of mineral deposits in the process of their extraction as part of the protection of developed deposit
- Kostka E. A. (JURIS Law Firm, Poland), Polak P. (Kancelaria Radcy Prawnego Anna Polak, Poland) - The influence of the principles of planning and implementing specific investment processes on safeguarding recognized mineral deposits and prospective mineral areas

16.00-16.30 Coffee break

Media patronage



16.30-18.30 Session III

- **Ericsson M.** (*Luleå University of Technology, Sweden*), **Löf O.**, **Löf A.** (*RMG Consulting, Sweden*) - Locus of metal mining vs locus of control over mine production - a brief review over 10 000 years
- **Barcelo E.** (*Industrial Minerals Association-Europe, Belgium, Aalto University, Finland; Omya International AG, Switzerland*), **Shtiza A.** (*Industrial Minerals Association-Europe, Belgium*) - Why does the mining in Europe still matter?
- **Guzik K.**, **Kot-Niewiadomska A.** (*Mineral and Energy Economic Research Institute, Polish Academy of Sciences, Poland*) - Need of deposits safeguarding in the light of the sufficiency of the developed resource base - case of rock minerals deposits in Poland
- **Stary J.** (*Czech Geological Survey, Czech Republic*), **Kavina P.** (*Ministry of Industry and Trade, Czech Republic*), **Gabriel Z.** (*Czech Geological Survey, Czech Republic*) - Critical minerals of the EU (CRM) in the territory of the Czech Republic
- **Wołkowicz S.** (*Polish Geological Institute, Poland*), **Naworyta W.** (*AGH University of Science and Technology, Poland*), **Zglinicki K.** (*Polish Geological Institute, Poland*) - European Green Deal - the need for its revision in the face of the war in Ukraine
- **Eerola T.** (*GTK Geological Survey of Finland, Finland*) - Corporate conduct, commodity and place: ongoing mining and mineral exploration disputes and their implications for the social license to operate in Finland
- **Sokolova I.** (*International Raw Materials Observatory, Belgium*) - Best social licensing practices in EU with respect to Critical Raw Materials mining

19.30 Gala Dinner

11.05.2022 (Wednesday)

09.00-10.00	Poster session
10.00-10.30	Coffee break
10.30-13.00	Session IV and Closing remarks

- **Raha M.** (*Ministry of Economic Affairs and Communications, Estonia*) - The mineral policy of Estonia
- **Simic V.**, **Životić D.**, **Miladinović Z.** (*University of Belgrade, Serbia*) - Mineral safeguarding in Serbia
- **Wertichová B.** (*VSB Technical University of Ostrava, Czech Republic*), **Wertich V.**, **Rambousek P.**, **Godány J.** (*Czech Geological Survey, Czech Republic*) - Assessment of the Czech concept of mineral safeguarding in European good practice context
- **Tost M.** (*Montanuniversitaet Leoben, Austria*), **Kot-Niewiadomska A.** (*Mineral and Energy Economic Research Institute, Polish Academy of Sciences, Poland*), **Gugerell K.** (*University of Natural Resources and Life Sciences, Austria*) - Mining and Europe's World Heritage Cultural Landscapes
- **Lipiński A.** (*Jan Długosz University, Poland*) - Strategic mineral deposits. The drafted method of their protection
- **Mazurek S.** (*Polish Geological Institute, Poland*), **Szamałek K.** (*University of Warsaw, Poland*) - Proposed rules for determining strategic mineral deposits in Poland and for their safeguarding
- **Kaczan W.**, **Wirth H.** (*Wrocław University of Science and Technology, Poland*) - The proposition of a systematic approach in the method of historical prospecting and exploration of anthropogenic deposits
- **Speczik S.**, **Zieliński K.** (*Mozów Copper Ltd. Poland*) - Land management recommendations for protecting potential copper and silver mining areas in the Lubuskie Province, western Poland

13.00-14.00 Lunch

14.00 - Departures

Conference costs

- **Participation in the conference is free** and includes: attendance to conference sessions, conference proceedings, simultaneous translation, all-day catering, together with Conference Gala Dinner
- **Accommodation and travel costs are not included**

Conference language

- **English** and **Polish** - simultaneous translation during the sessions will be provided

Conference important dates

- **15 April 2022** - Last minute abstract submission deadline (for poster presenters only)
- **30 April 2022** - **Registration deadline for participants**

Conference venue

- **Qubus Hotel Kraków**, Nadwiślańska 6, Kraków (www.qubushotel.com)
- A special promotional code **KRAKOW 2022**, entitling to a **25% discount**. The code can be used when booking a room at the following address [Qubus Hotel Kraków - Profitroom Booking Engine](#)

Scientific Committee of Conference

- ❖ Krzysztof Galos - *Mineral and Energy Economy Research Institute PAS (Poland)* - Chairman
- ❖ Vitor Correia - *International Raw Materials Observatory (Belgium)*
- ❖ Magnus Ericsson - *Luleå University of Technology (Sweden)*
- ❖ Katharina Gugerell - *University of Natural Resources and Life Sciences (Austria)*
- ❖ Pavel Kavina - *Ministry of the Industry and Trade (Czech Republic)*
- ❖ Alicja Kot-Niewiadomska - *Mineral and Energy Economy Research Institute PAS (Poland)*
- ❖ António Mateus - *University of Lisbon (Portugal)*
- ❖ Peter Moser - *University of Leoben (Austria)*
- ❖ Marek Nieć - *Mineral and Energy Economy Research Institute PAS (Poland)*
- ❖ Vladimir Simic - *University of Belgrade (Serbia)*
- ❖ Slavko Solar - *UNECE Expert Group on Resource Management (Switzerland)*
- ❖ Krzysztof Szamalek - *University of Warsaw (Poland)*
- ❖ Michael Tost - *University of Leoben (Austria)*
- ❖ Linda Wårell - *Luleå University of Technology (Sweden)*

This conference is supported by the Polish National Agency for Academic Exchange



POLISH NATIONAL AGENCY
FOR ACADEMIC EXCHANGE

under Grant No. PPI/APM/2019/1/00079/U/00001

Detailed information and contact

E-mail: SafeMin4Europe@min-pan.krakow.pl

Website: <https://safemin4europe.eu/home>

Registration:

<https://safemin4europe.eu/registration/form>

Contact persons

Krzysztof Galos: kgalos@min-pan.krakow.pl

Alicja Kot-Niewiadomska: a.kn@min-pan.krakow.pl